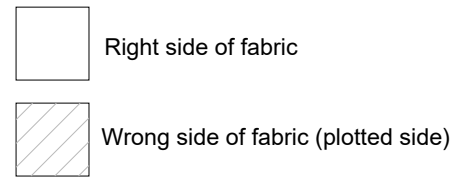
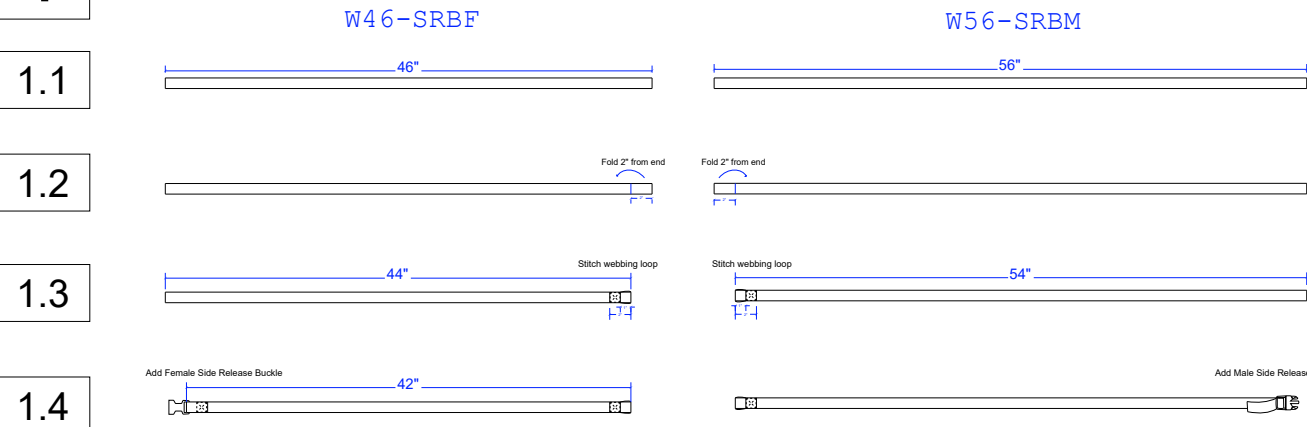


KEY

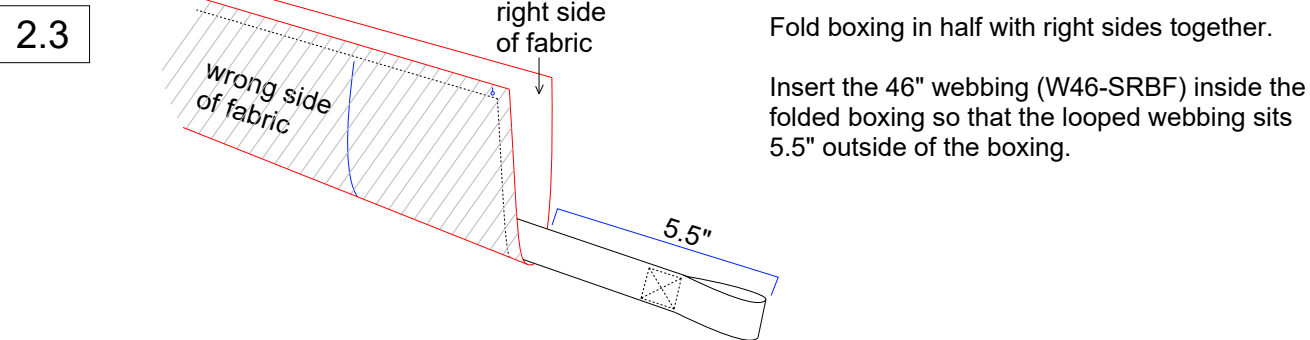
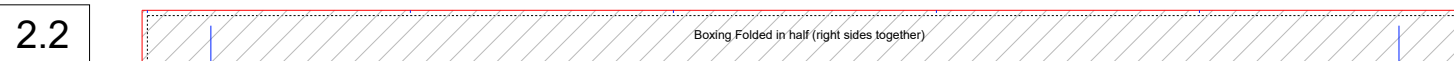
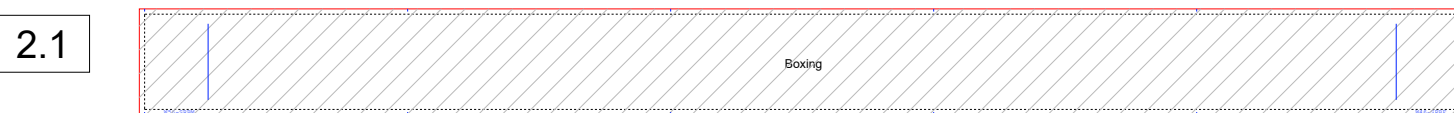


- SRBF Side Release Buckle (Female)
- SRBM Side Release Buckle (Male)
- SC Shock Cord
- W Webbing
- Origin Point (Start Sewing Here)

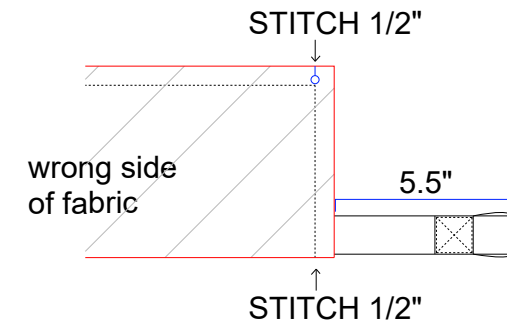
1 Webbing



2 Boxing



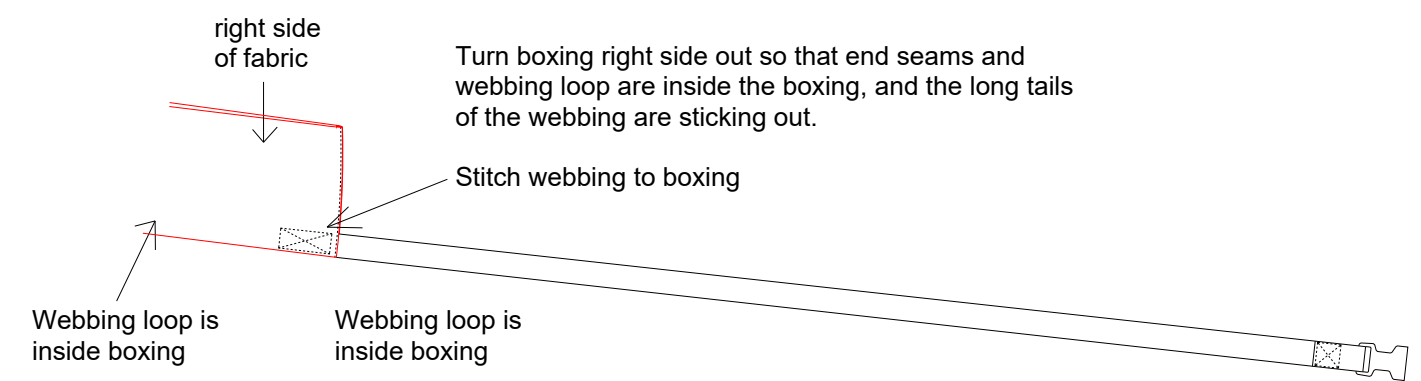
2.4



Stitch the end of the boxing with 1/2" seam allowance while also stitching through the webbing.

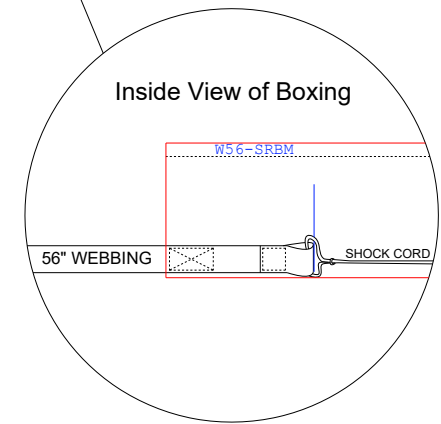
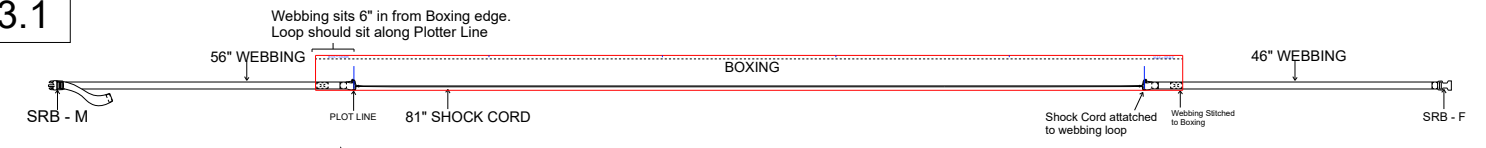
***Repeat same steps on other end of boxing with 56" webbing (W56-SRBM)

2.5



3 Shock Cord

3.1



Attach Shock Cord to webbing loops on both ends of the boxing.