

# AQUALON®

## EDGE

Roll Width: 60 inches • Weight: 8.75oz/yd<sup>2</sup>

Aqualon® Edge with Perfecta Marine® technology provides superior heat reduction and heat reflection, and exceptional UV performance.

Featuring innovative technology and these enhanced benefits, Trivantage® offers an industry-leading 7-year warranty for this hybrid coated fabric.

**Note:** Full enclosures should be vented for air circulation.

*Colors are representative only. Small variations in shade should be anticipated and are with commercial tolerances.*



**Ivy Green**  
776203



**True Teal**  
776204



**True Blue**  
776212



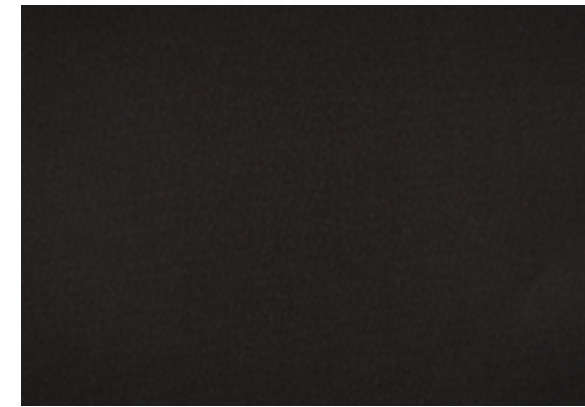
**Indigo Blue**  
776269



**Atlantic Blue**  
776244



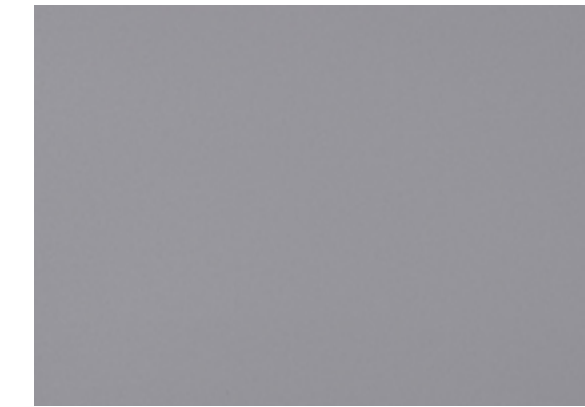
**Nautical Navy**  
776228



**Black Onyx**  
776200



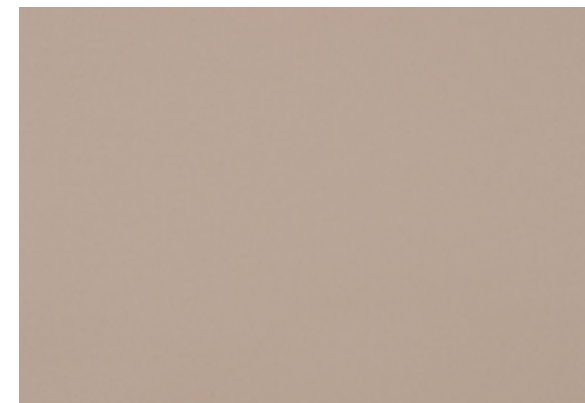
**Charcoal Grey**  
776218



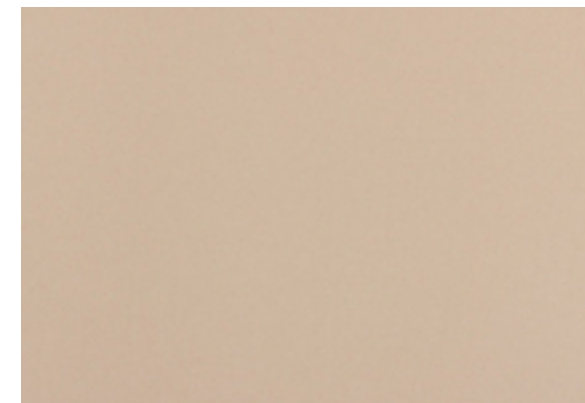
**Slate Grey**  
776271



**Classic Silver**  
776242



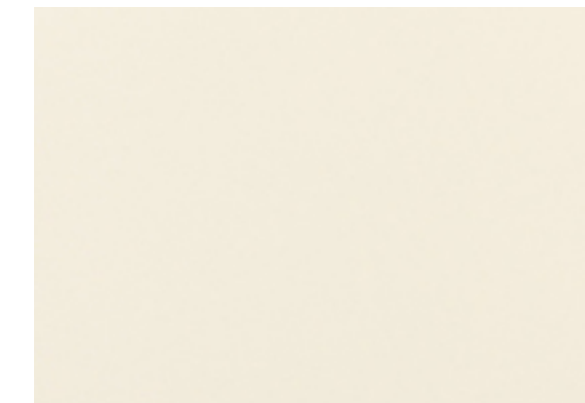
**Basic Beige**  
776268



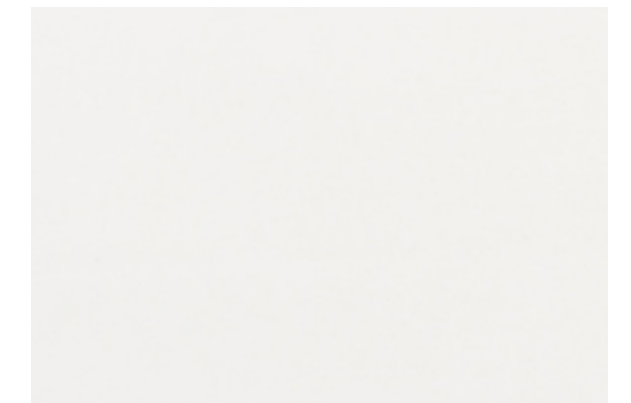
**Oxford Tan**  
776225



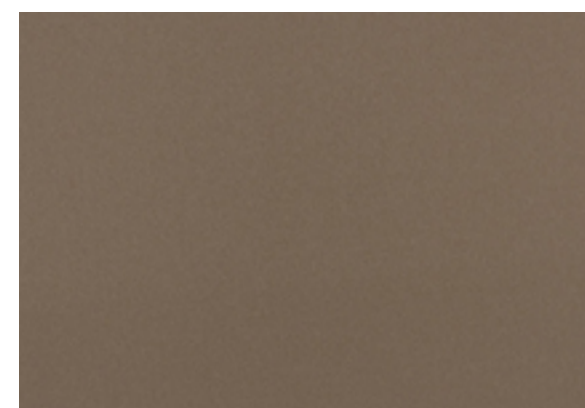
**Toast**  
776249



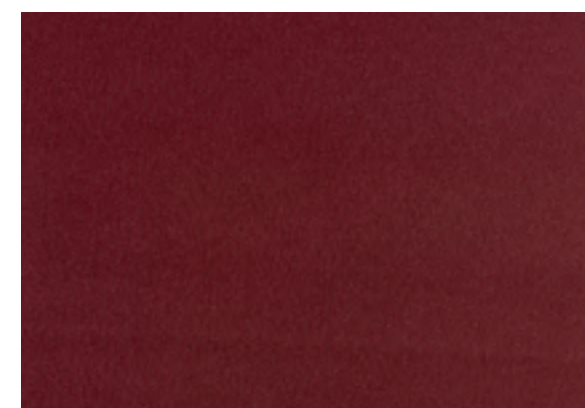
**Coastal Ivory**  
776208



**Alpine White**  
776217



**Mountain Taupe**  
776221



**Cabernet**  
776209



**Scarlet**  
776205



**Apple Red**  
776207



**Cherry Red**  
776213



### Typical Properties of Aqualon® Edge

TESTED PROPERTY	AQUALON EDGE
Width, inches: GSF Method	60
Weight, oz/yd <sup>2</sup> : ASTM D 3774	8.75
Count: ASTM D 3775 Warp x Fill	96 x 33
Tensile, lbs: ASTM 5034 Warp x Fill	420 x 330
Tongue Tear, lbs: ASTM 022561 Warp x Fill	24 x 20
Chatillon Hand, lbf: ASTM D 4032	6.00
Height Hydrostat, cm: AATCC Method 127	90+
Spray Rating: AATCC Method 22	100
Bag Test, 8 & 24 hrs: GSF Method	Pass
Water Permeability After Cold Crack, cm: AATCC 169	60+ With no visual signs of cracking
Heat Buildup Test (Temperature Reduction °F) ASTM D 4803	25°F



**Need help?**  
Your customer care team is just a call or click away.

800.786.1876  
trivantage.com